

SURVEY OF CHILDREN'S ATTITUDES TO SCHOOL PLAYTIMES

August 2009

This survey was carried out on a random sample of children attending Play events throughout the county of Nottinghamshire during the summer school holiday of 2009.

The data has been collated from questionnaires that asked a total of 18 questions relating to the child's views on their school playtime.

We were interested in playtimes at infant and junior schools so older children were asked to respond about the last school they attended up to the age of 11.

We enquired about what responders considered to be their main language and all respondents stated that it was English.

A total of 48 questionnaires were completed.

Presented by
The Play in Schools Association working in partnership with
Nottinghamshire County Council's Play Service

Gedling Area

	M/F	Age	Main Language (E=English)	Score enjoyment of playtime (10=high) 1 - 10	Score playtime behaviour (1=poor) 1 - 10	Score playtime bullying (1=none) 1 - 10	Liking of playtime staff (10=high) 1 - 10	Liking of wet play provision (10=high) 1 - 10
	M	9	E	10	10	5	10	5
	M	9	E	10	8	5	10	10
	F	11	E	7	7	5	5	5
	F	6	E	10	5	5	5	5
	F	12	E	10	6	5	6	10
	F	12	E	8.5	6.5	5.5	3	2.5
	M	7	E	7	5	3	8	8
	F	8	E	5	5	5	10	5
	M	9	E	10	5	5	5	1
	F	12	E	5	1	5	5	1
Average				8.25	5.85	4.85	6.7	5.25

Mansfield Area

	M/F	Age	Main Language (E=English)	Score enjoyment of playtime (10=high) 1 - 10	Score playtime behaviour (1=poor) 1 - 10	Score playtime bullying (1=none) 1 - 10	Liking of playtime staff (10=high) 1 - 10	Liking of Wet play provision (10=high) 1 - 10
	F	11	E	7	5	5	8	9
	F	10	E	7	4	3	6	8
	F	9	E	10	5	1	5	5
	F	9	E	9	7	1	7	4
	F	5	E	5	6	2	7	7
	F	5	E	10	8	1	8	8
	M	4	E	6	4	1	1	8
	M	6	E	10	10	1	10	10
	F	10	E	5	6	1	8	7
	M	5	E	7	7	1	8	10
Average				7.6	6.2	1.7	6.8	7.6

Broxtowe Area

	M/F	Age	Main Language (E=English)	Score enjoyment of playtime (10=high) 1 - 10	Score playtime behaviour (1=poor) 1 - 10	Score playtime bullying (1=none) 1 - 10	Liking of playtime staff (10=high) 1 - 10	Liking of wet play provision (10=high) 1 - 10
	F	11	E	1	1	5	1	1
	F	11	E	10	5	1	10	10
	M	9	E	1	5	4	4	1
	F	13	E	5	5	1	1	4
	F	7	E	5	5	5	10	5
	F	7	E	10	5	1	10	5
	F	6	E	10	5	1	5	9
Average				6	4.4	2.6	5.9	5

Newark Area

	M/F	Age	Main Language (E=English)	Score enjoyment of playtime (10=high) 1 - 10	Score playtime behaviour (1=poor) 1 - 10	Score playtime bullying (1=none) 1 - 10	Liking of playtime staff (10=high) 1 - 10	Liking of wet play provision (10=high) 1 - 10
	F	11	E	10	1	5	5	1
	F	11	E	10	10	1	5	5
	F	8	E	5	5	1	10	10
	M	8	E	7	10	5	-	-
	M	6	E	10	5	1	5	1
	F	8	E	9	5	2.5	6.5	3
	F	7	E	5	5	1	10	10
Average				8	5.9	2.4	6.9	5

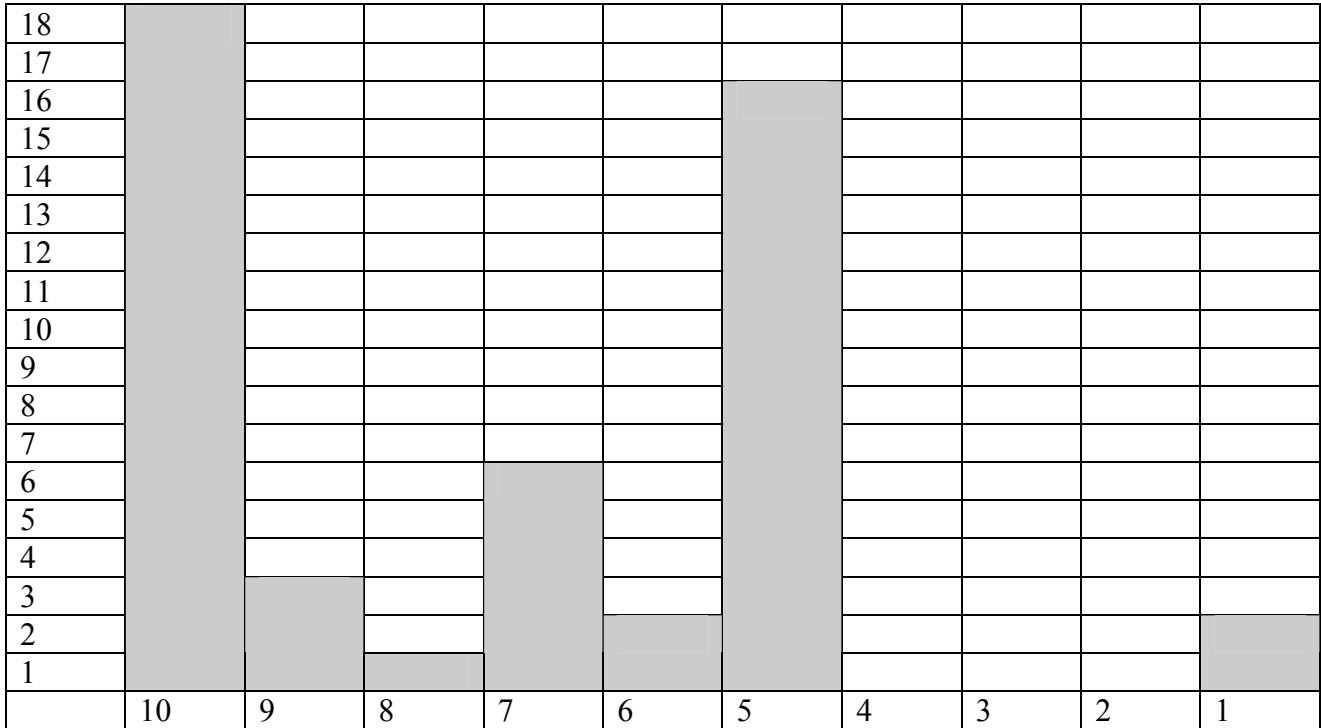
Ashfield Area

	M/F	Age	Main Language (E=English)	Score enjoyment of playtime (10=high) 1 - 10	Score playtime behaviour (1=poor) 1 - 10	Score playtime bullying (1=none) 1 - 10	Liking of playtime staff (10=high) 1 - 10	Liking of wet play provision (10=high) 1 - 10
	F	9	E	5	5	5	10	5
	F	10	E	10	10	1	10	5
	F	11	E	5	5	5	5	5
	F	13	E	5	5	5	5	1
	F	10	E	5	8	1	9	5
	F	14	E	8	7	5	7	2
	F	14	E	5	5	10	7	2
	F	12	E	10	5	5	5	5
	F	14	E	6	2	7	1	1
	M	8	E	10	5	5	9	10
	F	8	E	10	5	5	10	5
	F	10	E	5	5	1	5	5
	F	9	E	5	8	1	7	6
	F	10	E	5	8	1	9	7
Average				6.7	5.9	4.1	7.1	4.6

Totals of sample of 48 responses

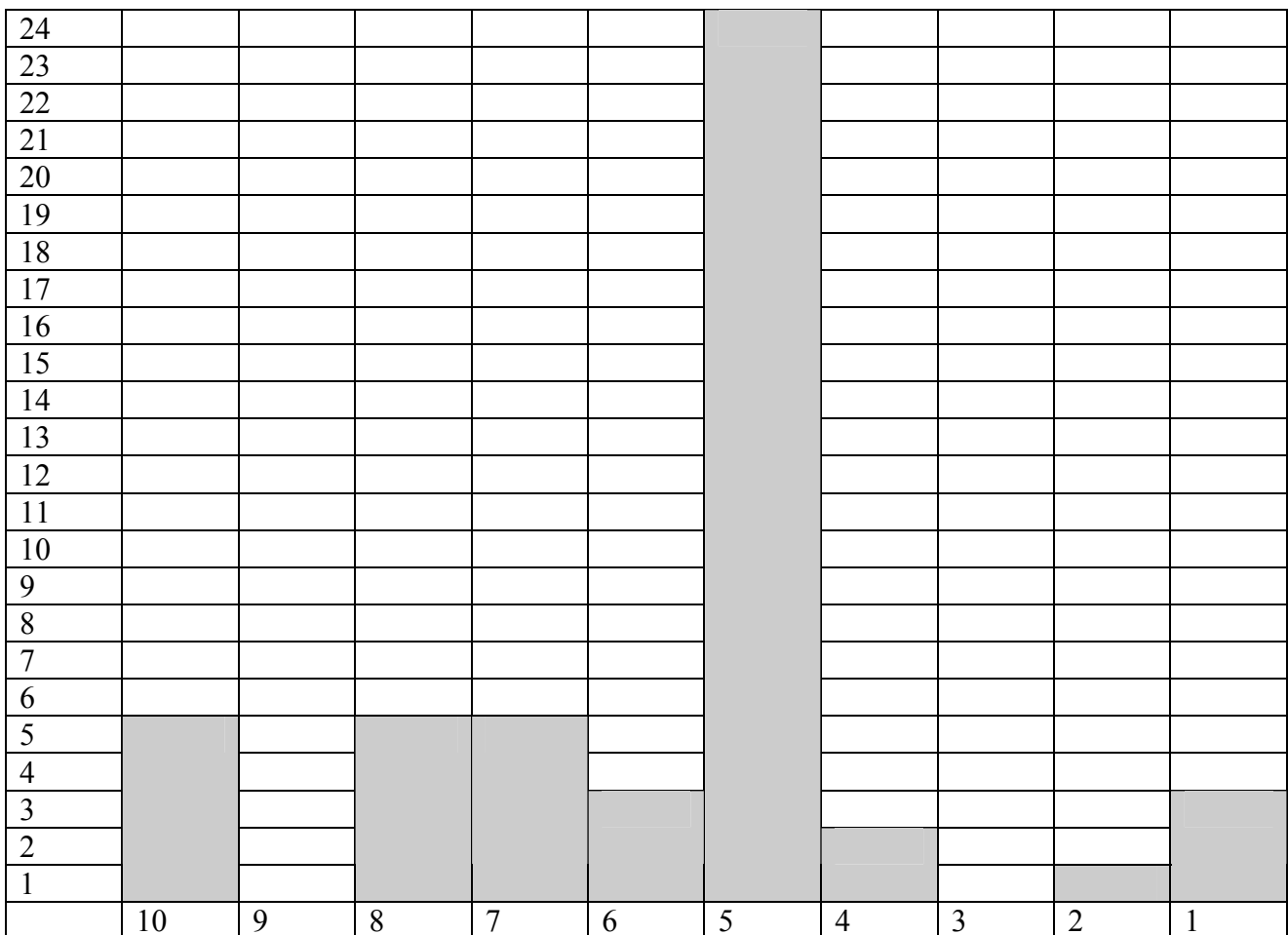
	Score enjoyment of playtime (10=high) 1 - 10	Score playtime behaviour (1=poor) 1 - 10	Score playtime bullying (1=none) 1 - 10	Liking of playtime staff (10=high) 1 - 10	Liking of wet play provision (10=high) 1 - 10
Average	7.3	5.7	3.3	6.7	5.5

Measure of enjoyment of playtimes by distribution of responses



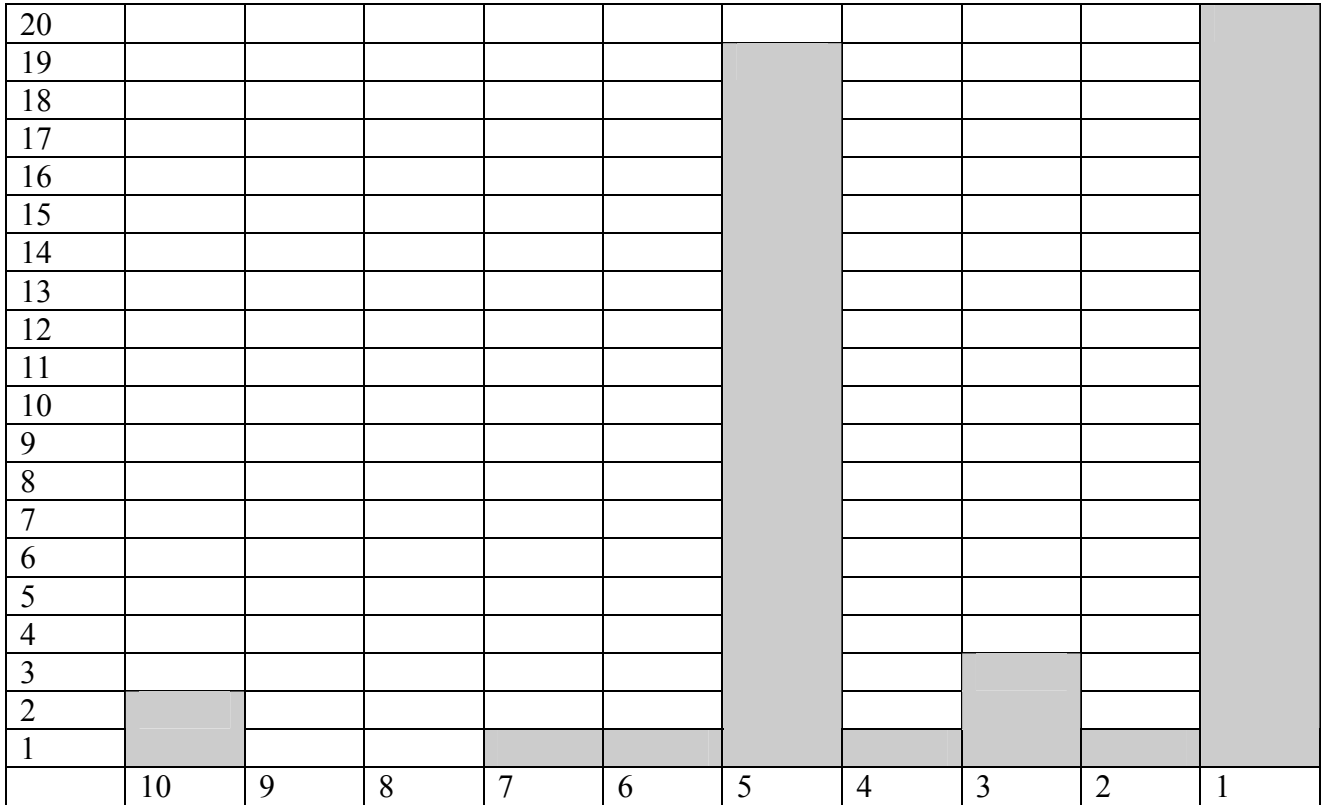
Score; 10 = 'they were brilliant', 5 = 'they were ok', 1 = 'I hated them'

Measure of perception of playtime behaviour by distribution of responses



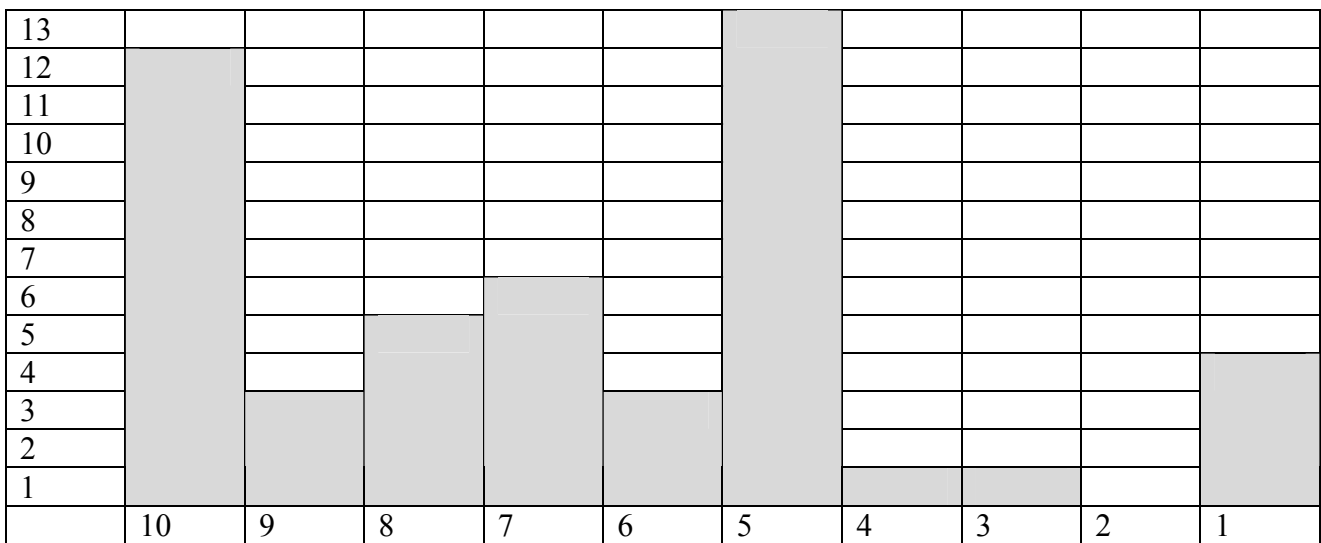
Score: 10 = 'behaved really well', 5 = 'behaved ok', 1 = 'behaved badly'

Perception of degree of bullying at playtimes by distribution of responses



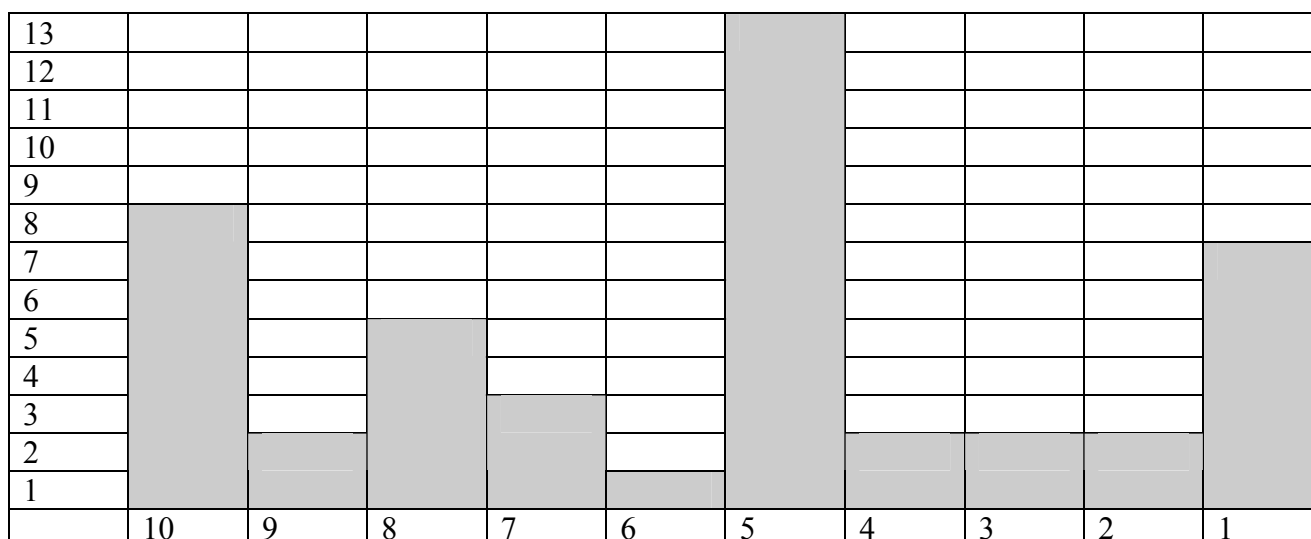
Score: 10 = 'lots of bullying', 5 = 'some bullying', 1 = 'no bullying'

Perception of liking of supervisory staff at playtimes by distribution of responses



Score: 10 = 'they were brilliant', 5 = 'they were ok', 1 = 'I did not like them'

Perception of enjoyment of wet playtimes by distribution of responses



Score: 10 = 'they were brilliant', 5 = 'they were ok', 1 = 'I did not like them'

Feedback In response to specific questions we received the following feedback:

1. What did you like best about playtimes?

- Playing with friends was mentioned 23 times.
- Football was mentioned 6 times
- No lessons was mentioned 6 times
- Climbing frames were mentioned 5 times
- Basketball and netball were mentioned 4 times
- Running around was mentioned 3 times
- Cricket
- Bulldog
- Skipping
- Hula hoops
- Tig
- Colouring
- Reading
- Making up games
- Being outdoors
- Sunshine
- Makes me happy

2. What do you like least about playtimes?

- Bullying was mentioned 6 times
- Too short was mentioned 4 times
- Being told off/teachers was mentioned 4 times
- Ball games taking up space/lack of space was mentioned 4 times
- Being alone was mentioned 3 times
- Not enough toys/games to share was mentioned 3 times
- Annoying people/arguments was mentioned 2 times
- Being chased by boys
- Not allowed to run
- Can't go to toilet
- Indoor play

3. How did your school deal with bullying?

Did nothing was mentioned 6 times
Sent to head teacher mentioned 6 times
Staff talk to children mentioned 3 times
Playground friends mentioned 3 times
Time out zone mentioned 2 times
Anti-bullying week mentioned 2 times
Detention mentioned 3 times
Exclusion mentioned 2 times
Parent teacher meetings mentioned 3 times
Assembly about bullying
Suggestion box about bullying
School council comes up with ideas
Blue day – all dress in blue to support anti-bullying and are given leaflets
Red and yellow cards – leading to detention and then exclusion
Keeping bullies in during playtimes

4. What are playtime supervisory staff called?

Dinner/time ladies was mentioned 16 times
Middays was mentioned 15 times
Teacher was mentioned 12 times
Teaching assistants was mentioned 2 times
Staff was mentioned 2 times

5. What did you like about the staff who supervised playtimes?

Kind mentioned 7 times
Helpful mentioned 4 times
Good listener mentioned 3 times
Played games mentioned 3 times
Funny mentioned 3 times
Gave help mentioned 2 times
Sort out problems mentioned 2 times
Help if hurt/accident mentioned 2 times
Help you when down
Sort out bullying
Look after you
Provide games
Involve people if lonely
Tell stories
Give sweets
Chat to

6. What do you dislike about the staff who supervise playtimes?

Shouting mentioned 4 times
Strict mentioned 2 times
Tell you off mentioned 2 times
Don't resolve arguments mentioned 2 times
Allow bullying
Bossy
Don't listen
Not interested
Tell kids to go away
Not always around
Some children's mums

7. Favourite things to do at playtime.

Play with friends mentioned 14 times
Football mentioned 6 times
Play games mentioned 4 times
Play equipment mentioned 3 times
Space hoppers
Cricket
Roll down hill
Hide and seek
Tig
Chatting
Chasing game
Board games
Read books
Climbing

8. What would have made playtimes more enjoyable?

Staff more involved mentioned 5 times
More football mentioned 3 times
Tennis mentioned 3 times
Allowed to run mentioned 2 times
Cricket mentioned 2 times
Connect 4
Lego
Snakes and ladders
Colouring
Hoops
Skipping
Rounders
Chalk on floor
Bluebells
Swings
More balls
More girly stuff
Normal toys
More play space
Allowed on field

9. Are there any things you are not allowed to do?

Bulldog mentioned 5 times
Tig mentioned 5 times
Play fighting mentioned 4 times
Climbing mentioned 3 times
Jumping walls mentioned 3 times
Hide and seek
Ball games
Running
No hard balls
Football
Noise in quiet areas
No rough games
Bullying
Playing card games, playing with paper planes, colouring, mud pies.

10. What do you do when it rains?

- Board games mentioned 5 times
- Watch TV mentioned 2 times
- Watch videos
- Colouring
- Play cards
- Read books
- Bench ball
- Wet play box with games
- Lego
- Talk

11. What could improve wet play days?

- Dancing
- Puppets
- Let children bring in own toys
- Colouring
- More space to play
- More magnetix
- Make dens under tables
- Painting
- Lego
- Do athletics in hall.
- More books

Conclusions

This small survey suggests that most children enjoy the play experiences offered by their schools, that they have good relationships with the supervisory staff and that being bullied is not a major issue amongst this sample.

Schools appear to have a good range of pro-active anti-bullying measures in place and it appears these are mainly successful.

The distribution of results also suggests that there are a minority of children who do not enjoy playtimes, feel isolated and overlooked; it may be worth school staff considering what measures they take to identify and support such individuals.

Some schools seem to be risk-averse in terms of the type of games and activities they allow and children report that greater play space, more facilities, more staff involvement with a greater range of physical sports and game activities would be the main things that would improve their play experience.

Wet play times score as less enjoyable than outdoor play – this should not be a surprise as many children report that it is the physical release of energy through sports, running around and playing chasing games that they most enjoy as well as socialising with children from other classes.

In summary this survey paints a very positive picture of playtimes in the counties schools. It also suggests that the measures promoted by the play service over the past few years now appear to be firmly integrated into the school day and that school midday staff are doing a good job.